

## ARBOShield Pro Class A W1 Breather Membrane

ARBO Façade Solutions (ARBO FS) is the new name for a ground-breaking initiative from ARBO, one of the longest established names in UK construction materials.

ARBOShield Pro Class A W1 Breather Membrane is an extremely vapour permeable wall membrane with a low emissivity reflective surface and class A2-s1,d0 fire classification.

### MAIN APPLICATIONS

ARBOShield Pro Class A W1 Breather Membrane is suitable for practically all walling applications, especially high-rise and high-risk buildings such as schools, hospitals, care homes and residential blocks, helping to prevent the risk of fire spread. ARBOShield Pro Class A W1 Breather Membrane is also suitable for timber frame or modular off-site construction. The unique composition of ARBOShield Pro Class A W1 Breather Membrane resists the spread of fire across the cavity of the façade. ARBOShield Pro Class A W1 Breather Membrane can be installed onto almost any substrate. For further details, contact ARBO Technical Services [techservices@arbo.co.uk](mailto:techservices@arbo.co.uk)



### SIZE

Thickness	0.43mm
Roll Width	1200mm
Roll Length	35m

## TECHNICAL DATA

Product	Standard	Description	Performance
ARBOShield Pro Class A W1 Breather Membrane	EN 13501	Reaction to Fire	A2-s1,d0
	EN 13859-1	Resistance to Water Penetration	Class W1
	EN 13859-1	Tensile Strength MD	3200 N/50mm BS EN 12311-1
	EN 13859-1	Tensile Strength CD	3000 N/50mm BS EN 12311-1
	EN 13859-1	Flexibility at Low Temperature	-40 °C
	EN 12572	Water Vapour Transmission	0.08sd
	EN 13859-1	Resistance to Nail Tearing MD	580 N BS EN 12310-1
	EN 13859-1	Resistance to Nail Tearing CD	450 N BS EN 12310-1
		Resistance to UV Exposure	9 months, 5,000 hours passed*
	EN 12114	Airtightness	0.093m <sup>3</sup> /(h x m <sup>2</sup> 50 pa)

### Notes:

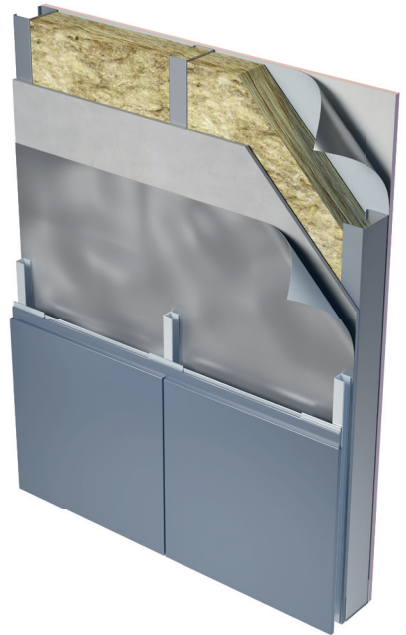
\*9 months UV exposure relates to the maximum continuous exposure during the construction phase.

## FIXING INSTRUCTIONS

Unroll ARBOShield Pro Class A W1 Breather Membrane and fix directly to the sheathing or insulation. ARBOShield Pro Class A W1 Breather Membrane should be secured to the substrate using the appropriate fixings. Fixings should be no more than 600mm horizontally and 500mm vertically (Figure 1). On a timber substrate, ensure stainless steel staples are used. On a masonry or SFS substrate, the membrane should be mechanically secured with an appropriate fixing that features an EDPM type washer.

All laps around window or door openings should be sealed using ARBOShield Pro Class A High Tack adhesive tape. Vertically, the membrane should overlap by at least 150mm and with the joints in a staggered pattern. ARBOShield Pro Class A W1 Breather Membrane should be installed with at least a 100mm lap horizontally starting at the bottom of the panel and working upwards to ensure the upper layer covers the lower layer, thus protecting the substrate from water runoff (Figure 2).

Fixing brackets for cladding/wall ties should be installed as per manufacturers' instructions and care should be taken around the interface between the Breather Membrane and fixing bracket. Where cavity barriers are installed in the horizontal position ARBOShield Pro Class A W1 Breather Membrane should be lapped over the DPC tray to allow water run-off.



Example SFS type façade wall construction

## FIXING INSTRUCTIONS

When using ARBOShield Pro Class A W1 Breather Membrane, as the external airtightness layer overlaps and penetrates through, the Breather Membrane should be sealed using ARBOShield Pro Class A High Tack Sealing Tape.

The composition of ARBOShield Pro Class A W1 Breather Membrane provides the Breather Membrane with a high level of UV resistance and therefore a long exposure time in both summer and winter, without impacting product performance.

Care should be administered during installation to prevent any damage to the Breather Membrane. Small puncture areas less than 50mm can be repaired using ARBOShield Pro Class A High Tack Sealing Tape. Should the puncture or tear exceed 50mm then the repair should be made using new Breather Membrane and taping around the inserted section.

## STORAGE

ARBOShield Pro Class A W1 Breather Membrane should be stored in cool, dry conditions in the upright position.

**IMPORTANT:** The information in this leaflet is given in good faith and based on results gained from experience and tests. However, all recommendations or suggestions are made without guarantee since the conditions of use are beyond our control. Goods are supplied subject to the Company's terms and conditions of sales, a copy of which is available on request.

## HEALTH & SAFETY

The material Safety Data Sheet must be read and understood before use. All relevant standards should be observed on site, including manual handling and working at height.

## ASSOCIATED PRODUCTS

ARBOShield Pro Class A W1 Breather Membrane  
 ARBOShield Pro Class A Air & Vapour Control Layer  
 ARBOShield Pro Class B W1 Breather Membrane  
 ARBOShield Pro External Perimeter Class A Membrane (EPAM)  
 ARBOShield Pro Class A High-Tack Sealing Tapes  
 ARBOprotect Pro  
 ARBO Intumescent and Fire-Resistant Mastics, Sealants and Foams  
 ARBOSeal Pro Sealing Tapes

CARLISLE® Adshead Ratcliffe & Co. Ltd United Kingdom

Derby Road | Belper  
 Derbyshire

DE56 1WJ  
 United Kingdom

T +44 (0)1773 826661  
 F +44 (0)1773 821215

E info.arbo@ccm-europe.com  
[www.arbo.co.uk](http://www.arbo.co.uk)